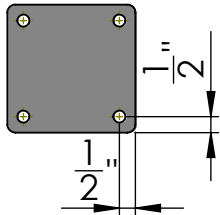
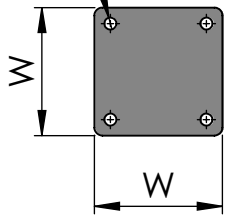


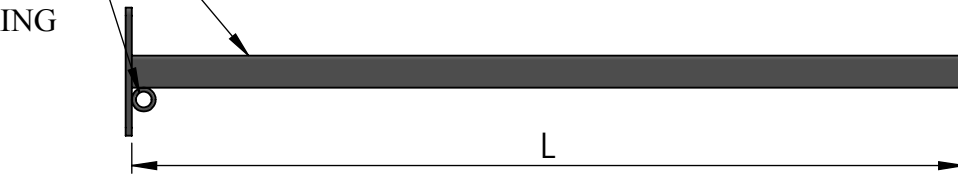
	Standard Sizes	
Arm Length (L)	20", 26"	32", 38"
Mounting Plate Width (W)	4"	6"

$\phi \frac{3}{8}$ " THRU TYP

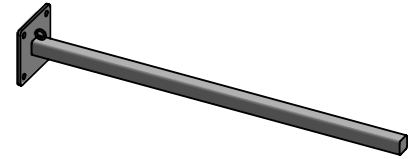
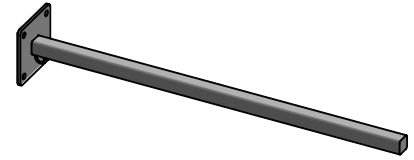


SIDE VIEW

1" STEEL
SQUARE TUBE
BANNER
TIE-DOWN RING



FRONT VIEW



Date: 05/2015
Scale: NTS
CB:
Order#:

Content: Straight Arm Wall Mounted Banner Bracket Pair
PN: 310B-WM
Color/Finish: Textured Black Powder Coat
Customer Approval: _____

Design by Sign Bracket Store. All visual representations and designs are the intellectual property of Sign Bracket Store and protected under copyright law. Any duplication of this design is in direct violation of the law and will result in legal action.
© Copyright 2008-2015



T: 888-919-7446

F: 760-603-0812