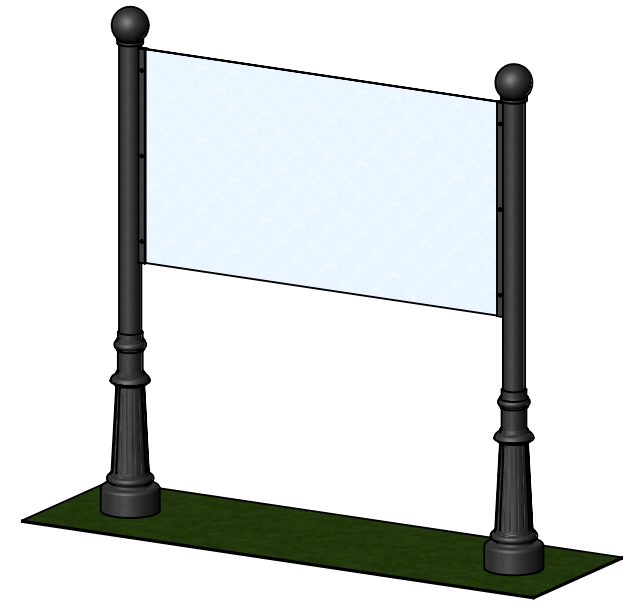
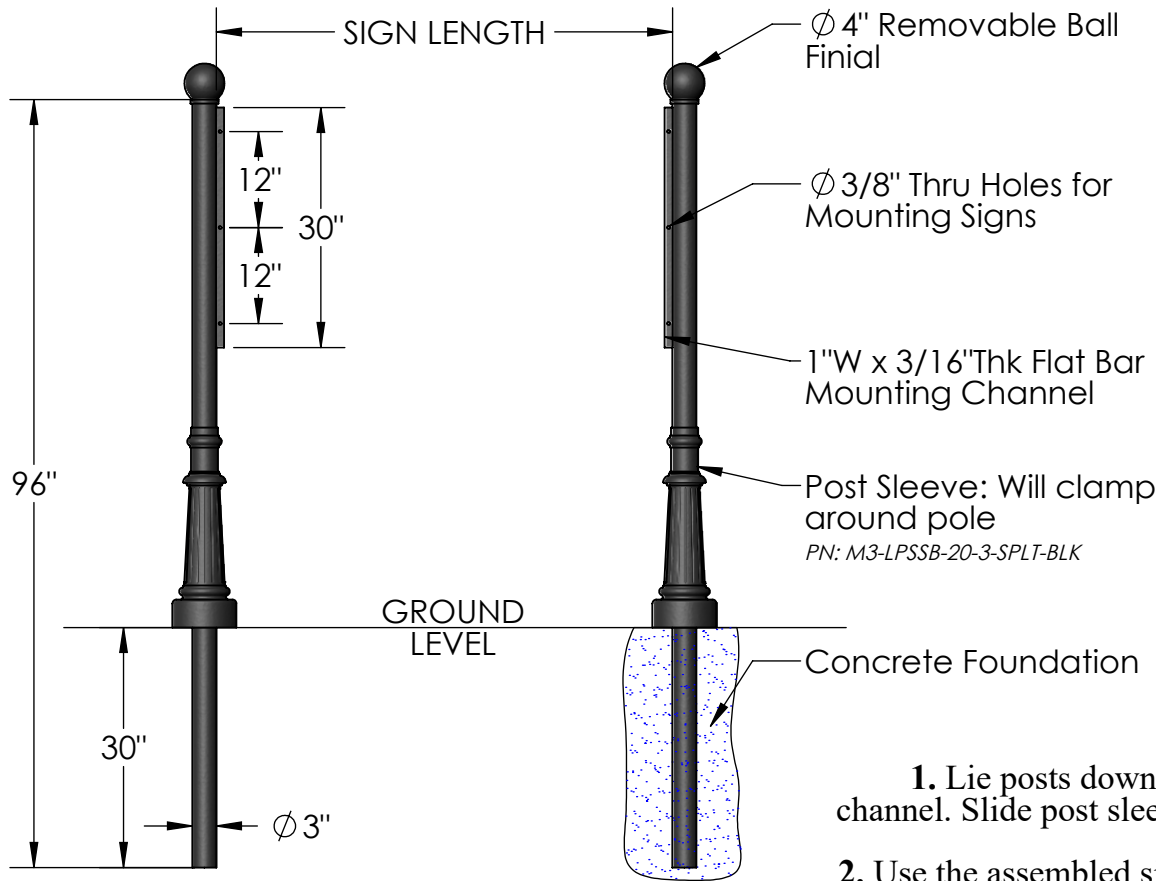



General Notes:

1. Sign sized to slip between channel (held with set screws)
2. Flat bar mounting channel welded to each post with $\phi 3/8"$ mounting holes



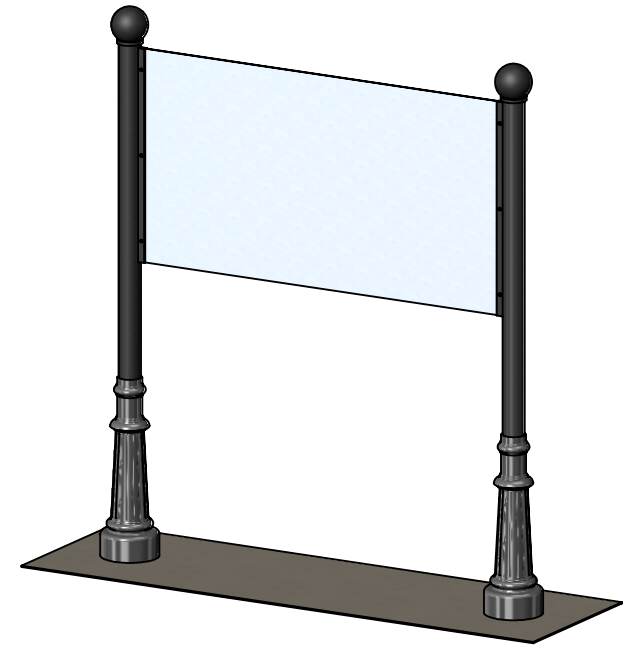
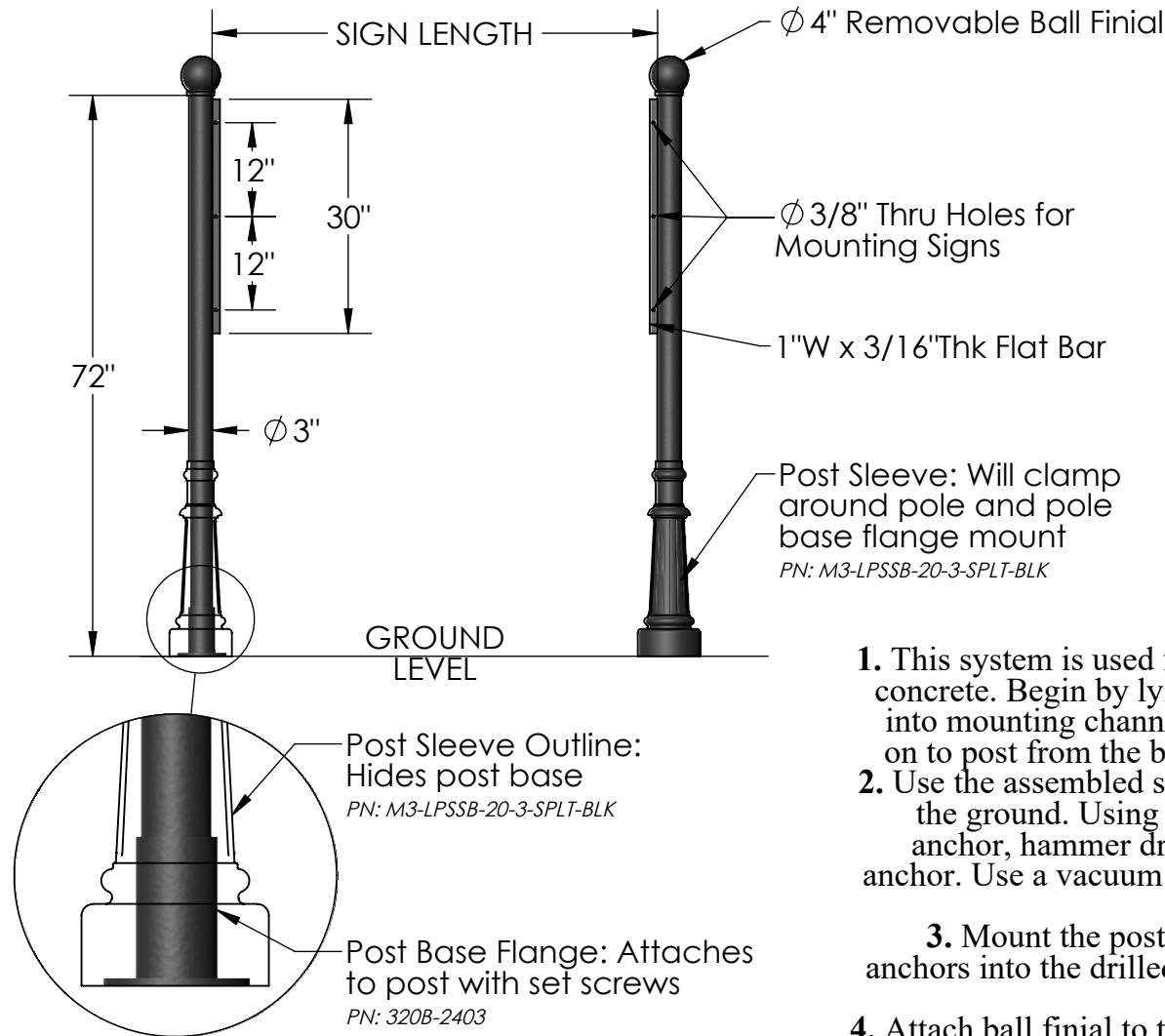
Instructions:

1. Lie posts down on ground, and slide sign substrate into mounting channel. Slide post sleeves on to post from the bottom. Fasten everything together with set screws.
2. Use the assembled sign as a guide to mark the location of each post on the ground. Dig two holes $\phi 10"$ x 30" deep at marked location. If the posts are 8' or taller above ground, dig hole 36" deep.
3. Insert posts into holes and use a bubble level to ensure the assembly is straight. Fill each hole with concrete.
4. Attach ball finial to top of completed post and panel system and fasten.

Material: Aluminum	Content: Double Post & Panel: Channel Design	Design by Sign Bracket Store. All visual representations and designs are the intellectual property of Sign Bracket Store and protected under copyright law. Any duplication of this design is in direct violation of the law and will result in legal action. © Copyright 2008-2017	 SIGN BRACKET STORE T: 888-919-7446 F: 760-603-0812
Scale: 1:24 DB: ZB Rev: B	PN: Color/Finish:		
Sheet: 1 of 3	Customer Approval: _____		

General Notes:

1. Sign sized to slip between channel (held with either set screws or bolt)
2. Flat bar mounting channel welded to each post with $\phi 3/8"$ mounting holes



Instructions:

1. This system is used for mounting a post and panel system into existing concrete. Begin by lying posts down on ground, and slide sign substrate into mounting channel. Slide post sleeve first and then post base flange on to post from the bottom. Fasten everything together with set screws.
2. Use the assembled sign as a guide to mark the location of each post on the ground. Using a masonry drill bit with the same diameter as your anchor, hammer drill into the concrete to the depth specified for your anchor. Use a vacuum or compressed air to clear the dust from each hole before inserting wedge anchors.
3. Mount the post base flanges to the concrete by tapping the wedge anchors into the drilled holes with a hammer. Tighten the anchors with a wrench or ratchet and socket.
4. Attach ball finial to top of completed post and panel system and fasten.

Material:
Aluminum

Scale: 1:24
DB: ZB
Rev: B
Sheet: 2 of 3

Content: Double Post & Panel: Channel Design

PN:

Color/Finish:

Customer Approval: _____

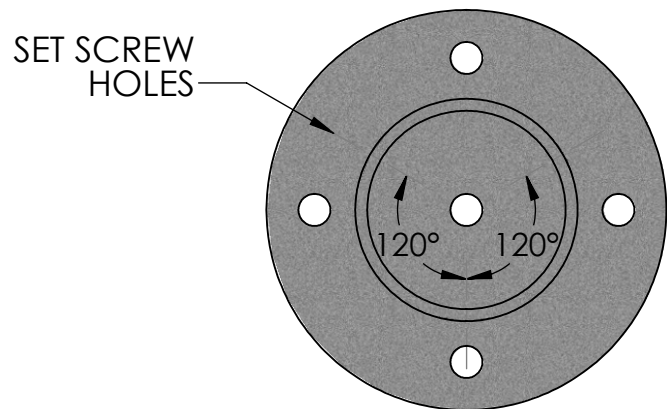
Design by Sign Bracket Store. All visual representations and designs are the intellectual property of Sign Bracket Store and protected under copyright law. Any duplication of this design is in direct violation of the law and will result in legal action.

© Copyright 2008-2017

 **SIGN BRACKET STORE**

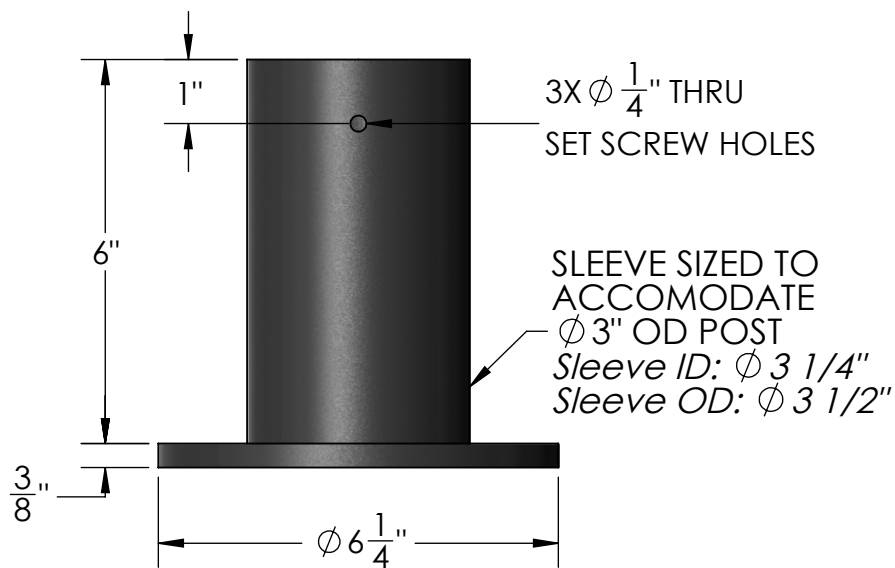
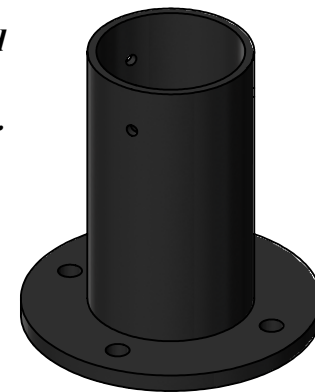
T: 888-919-7446

F: 760-603-0812

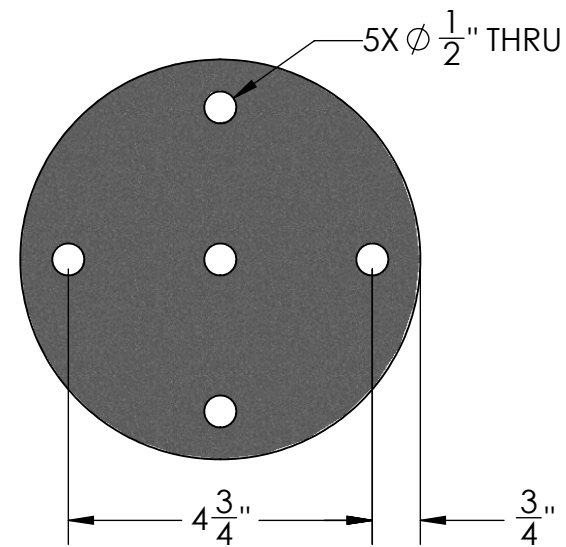


TOP VIEW

NOTE: Due to variations in the fabrication process, it is suggested that anchor holes be drill only after the flange has been received.



FRONT VIEW



BOTTOM VIEW

Material:
Steel


Content: 3" Standard Post Mounting Flange
PN: 320B-2403

Scale: 1:5
DB: ZB
Rev: B
Sheet: 3 of 3

Color/Finish: Textured Black Powder Coat
Customer Approval: _____

Design by Sign Bracket Store. All visual representations and designs are the intellectual property of Sign Bracket Store and protected under copyright law. Any duplication of this design is in direct violation of the law and will result in legal action.

© Copyright 2008-2017

 **SIGN BRACKET STORE**

T: 888-919-7446

F: 760-603-0812