

Tamper Resistant Nut Installation

For Aluminum Breakaway Nut Installation

WARNING: Final Installation of the Breakaway Nut is permanent. Removal after installation may require drilling and/or cutting which can result in damage of the bolt, nut, and/or sign.

Instructions

Step 1

Attach your sign onto a post with a bolt that penetrates the sign at least 5/8 inches deep.

Step 2

Take one Aluminum Breakaway Nut and twist the nut onto the bolt by hand with the bottom of the cone side facing the sign. Tighten as tight as you can by hand.

Step 3

Use an adjustable or a socket wrench on the hexagonal part of the nut to tighten the nut firmly into place. (**Note:** The hexagonal part may break off during this process.)

Step 4

If the hexagonal part has not broken free from the cone part during Step 3, use a pair of pliers or vise grips to snap the hexagonal part off.

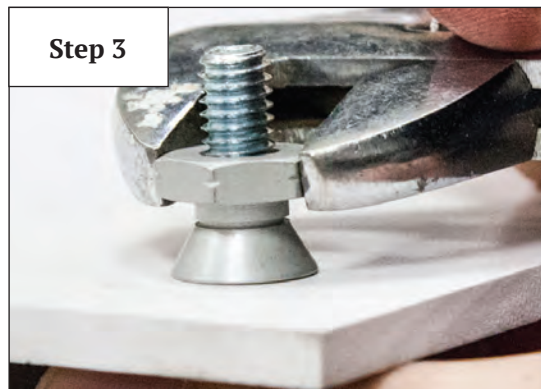
Step 5

Repeat steps 1-4 for all other bolt locations.

Step 2



Step 3



Step 4

